

# Stair and Balustrade Castings

---

## Section 2: Contents

Ornamental Stair Panels.....	10
Bowed Panels.....	17
Stair Spindles.....	19
Stair Bars .....	32
Newel Posts .....	38

**ORDER TODAY!**  
CALL: +44 (0)1506 822 721





# Stair and Balustrade Castings

Cast iron possesses many advantages over every other material in the designing and construction of stairways and balconies for modern developments and period properties alike. Offering excellent qualities for the admission of light, security from fire and being able to be formed into the most durable yet graceful forms makes it the perfect choice for any design of stairway.

At Ballantine Castings we have an unsurpassed range of ornamental stair panels, bowed panels, spindles and newel posts. Not even the world famous Saracen Foundry had a larger pattern range for these items and we still produce some of the castings illustrated in their catalogue from the early 1800s today. All of our stair and balustrade castings are manufactured in the UK to the highest level of quality using only traditional foundry techniques.

## Ornamental Stair Panels

We have a vast range of large, ornamental stair panels to suit most requirements. From stately homes to new build projects these panels are sure to add a long-term, aesthetic charm to any property. It has taken us nearly 200 years to amass our collection of stair panels ranging from fantastically ornate Victorian designs through to modern day, functional castings. We really do have stair panels to suit all possible tastes.

## Purchasing Guide

- Lengths of the panels can usually be extended or shortened to suit requirements.
- Width dimensions are taken at the widest section.
- Where required we can add steel pins to the tops of the castings to allow for easy site fixing.
- In the event of an order being placed please make sure the nature of the fixings required is stated; whether for wood, stone or brick.
- As a general guide you should allow 75mm for bedding into stonework.
- Weights of the castings are variable depending on which metal is ordered.
- Building Controls in the UK stipulate a minimum of 900mm height on stairways and 1100mm on landings with a maximum spacing of 100mm between uprights.
- All castings are hand-made to order using traditional foundry methods and can be produced in grey iron, ductile iron or in aluminium.

**ORDER TODAY!**

CALL: +44 (0)1506 822 721



**SP001** H1195xW210mm  
Cl:8.3kg Alu:3.0kg



**SP002** H910xW200mm  
Cl:6kg Alu:2.2kg



**SP003** H1140xW230mm  
Cl:8.0kg Alu:2.9kg



**SP004** H1035xW165mm  
Cl:5.3kg Alu:1.9kg



**SP005** H1060xW180mm  
Cl:6.3kg Alu:2.3kg



Ornamental Stair Panels continued



**SP006** H1000xW200mm  
Cl:7kg Alu:2.5kg



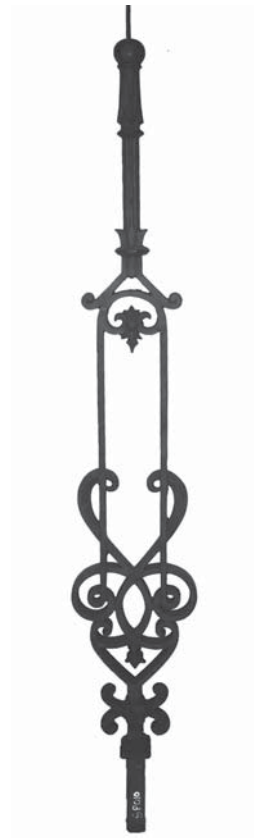
**SP007** H1150xW175mm  
Cl:7.2kg Alu:2.6kg



**SP008** H1100xW210mm  
Cl:7.5kg Alu:2.7kg



**SP009** H915xW175mm  
Cl:5.6kg Alu:2.0kg



**SP010** H1010xW160mm  
Cl:3.8kg Alu:1.4kg



**SP011** H1250xW170mm  
Cl:6.0kg Alu:2.2kg



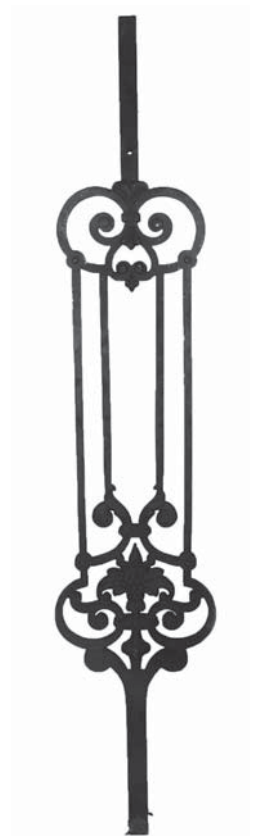
**SP012** H1020xW130mm  
Cl:4.2kg Alu:1.5kg



**SP013** H1030xW220mm  
Cl:6.2kg Alu:2.2kg



**SP014** H1030xW220mm  
Cl:6.5kg Alu:2.3kg



**SP015** H1110xW220mm  
Cl:7.2kg Alu:2.6kg



Ornamental Stair Panels continued



**SP016** H1000xW200mm  
Cl:5.6kg Alu:2.0kg



**SP017** H880xW210mm  
Cl:5.7kg Alu:2.1kg



**SP018** H1115xW160mm  
Cl:6.7kg Alu:2.4kg



**SP019** H970xW715mm  
Cl:6.9kg Alu:2.5kg



**SP020** H995xW190mm  
Cl:8.9kg Alu:3.2kg



**SP021** H1010xW215mm  
Cl:8.5kg Alu:3.1kg



**SP022** H1110xW210mm  
Cl:6.1kg Alu:2.2kg



**SP023** H1010xW225mm  
Cl:7.9kg Alu:2.8kg



**SP024** H930xW205mm  
Cl:5.9kg Alu:2.1kg



**SP025** H1000xW200mm  
Cl:6.9kg Alu:2.5kg



Ornamental Stair Panels continued



**SP026** H940 x W230mm  
Cl:7.9kg Alu:2.8kg



**SP027** H975 x W200mm  
Cl:8.2kg Alu:3.0kg



**SP028** H1000 x W270mm  
Cl:14.8kg Alu:5.3kg



**SP029** H1190 x W235mm  
Cl:14.0kg Alu:5.0kg



**SP030** H800 x W185mm  
Cl:7.3kg Alu:2.6kg



**SP031** H1000 x W220mm  
Cl:10.8kg Alu:3.9kg



**SP032** H850 x W235mm  
Cl:10.0kg Alu:3.6kg



**SP033** H850 x W220mm  
Cl:6.6kg Alu:2.4kg



**SP034** H960 x W180mm  
Cl:7.1kg Alu:2.6kg



**SP035** H1050 x W220mm  
Cl:7.8kg Alu:2.8kg



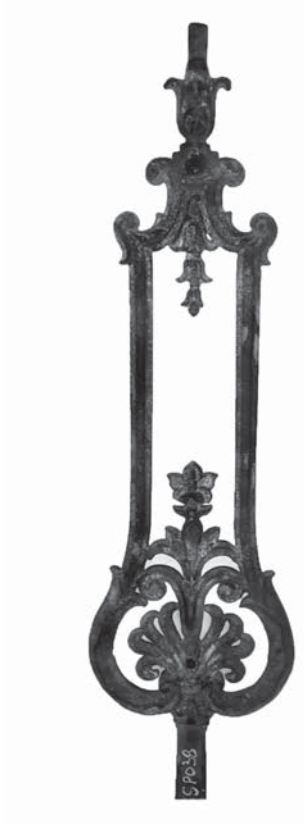
Ornamental Stair Panels continued



**SP036** H1070xW150mm  
Cl:7.1kg Alu:2.6kg



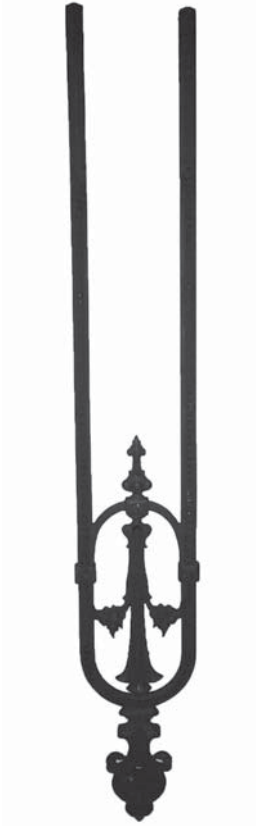
**SP037** H1000xW280mm  
Cl:7.8kg Alu:2.8kg



**SP038** H750xW210mm  
Cl:5.3kg Alu:1.9kg



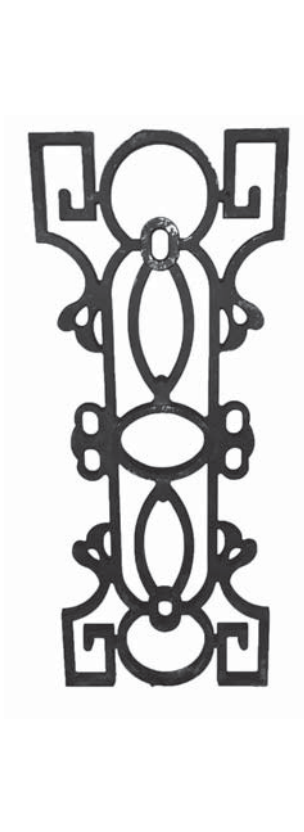
**SP039** H650xW225mm  
Cl:4.0kg Alu:1.4kg



**SP040** H1200xW185mm  
Cl:7.2kg Alu:2.6kg



**SP041** H1010xW145mm  
Cl:5.5kg Alu:2.0kg



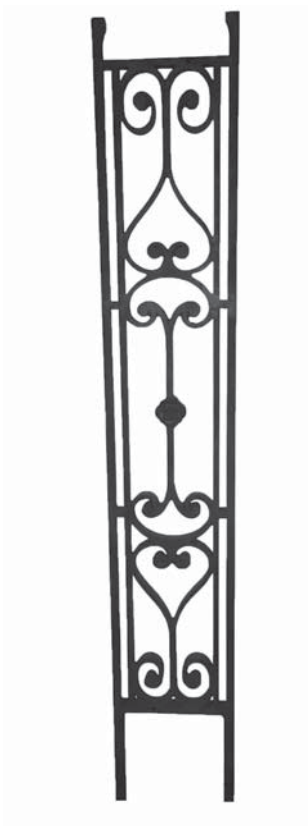
**SP042** H840xW310mm  
Cl:10.3kg Alu:3.7kg



**SP043** H885xW205mm  
Cl:9.3kg Alu:3.3kg



Ornamental Stair Panels continued



**SP044** H970 x W150mm  
Cl:6.2kg Alu:2.2kg



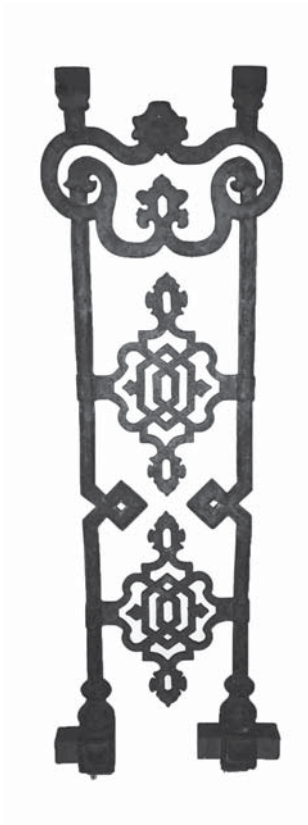
**SP045** H785 x W430mm  
Cl:12.9kg Alu:4.6kg



**SP046** H900 x W220mm  
Cl:13.6kg Alu:4.9kg



**SP047** H965 x W145mm  
Cl:6.1kg Alu:2.2kg



**SP048** H805 x W240mm  
Cl:8.1kg Alu:2.9kg



**SP049** H1060 x W250mm  
Cl:9.4kg Alu:3.4kg



**SP050** H1110 x W210mm  
Cl:9.4kg Alu:3.4kg



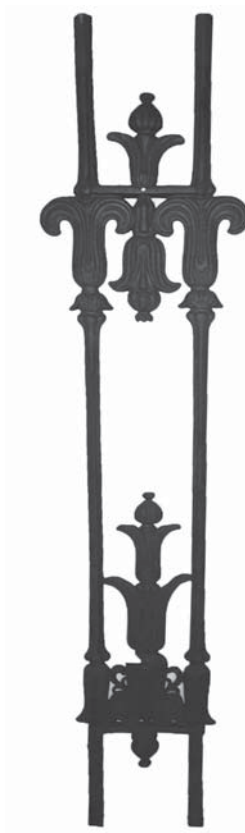
**SP051** H1090 x W160mm  
Cl:6.9kg Alu:2.5kg



Ornamental Stair Panels continued



**SP052** H850 x W200mm  
Cl:5.7kg Alu:2.1kg



**SP053** H1030 x W245mm  
Cl:8.1kg Alu:2.9kg



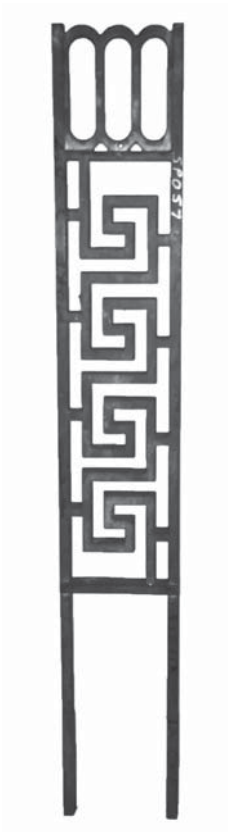
**SP054** H1200 x W240mm  
Cl:11.0kg Alu:4.0kg



**SP055** H1085 x W215mm  
Cl:10.1kg Alu:3.6kg



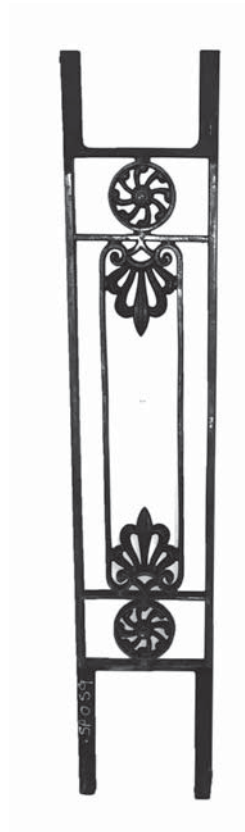
**SP056** H1200 x W170mm  
Cl:6.3kg Alu:2.3kg



**SP057** H980 x W150mm  
Cl:8.2kg Alu:3.0kg



**SP058** H880 x W155mm  
Cl:4.5kg Alu:1.6kg



**SP059** H1040 x W200mm  
Cl:7.8kg Alu:2.8kg



Church railing refurbishment in cast iron by Ballantine Castings





# Bowed Panels

Offering all customers a variation on a standard stair baluster. Bowed panels are perfect for balconies and landings and come in a number of different designs to suit any requirement.

## Purchasing Guide

- Lengths of the panels can usually be extended or shortened to suit requirements.
- Width dimensions are taken at the widest section.
- Where required we can add steel pins to the tops of the castings to allow for easy site fixing.
- As a general guide you should allow 75mm for bedding into stonework.
- Ornamentation is usually only on the side of the panel facing outwards.
- Weights of the castings are variable depending on which metal is ordered.
- Building Controls in the UK stipulate a minimum of 900mm height on stairways and 1100mm on landings.
- All castings are hand-made to order using traditional foundry methods and can be produced in grey iron, ductile iron or in aluminium.

**ORDER TODAY!**

CALL: +44 (0)1506 822 721



**B001** H1290xW165xD95mm  
Cl:7.0kg Alu:2.5kg



**B002** H870xW210xD95mm  
Cl:4.1kg Alu:1.5kg



**B003** H860xW165xD85mm  
Cl:7.2kg Alu:2.6kg



**B004** H810xW235xD110mm  
Cl:5.7kg Alu:2.1kg



**B005** H810xW130xD80mm  
Cl:4.7kg Alu:1.7kg



**B006** H780xW180xD85mm  
Cl:4.5kg Alu:1.6kg



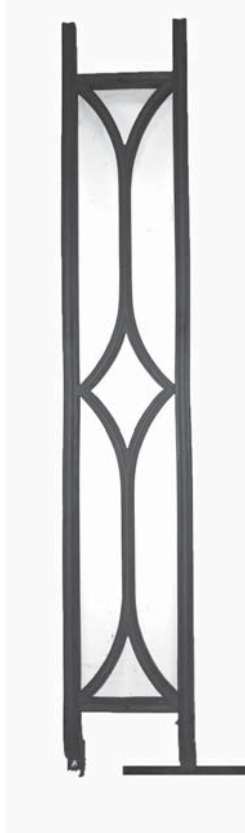
**B007** H940xW130xD85mm  
Cl:6.2kg Alu:2.2kg



Bowed Panels continued



**B008** H870 x W210 x D80mm  
Cl:3.7kg Alu:1.3kg



**B009** H900 x W150 x D50mm  
Cl:5.4kg Alu:1.9kg



**B010** H810 x W210 x D65mm  
Cl:6.3kg Alu:2.3kg



**B011** H770 x W270 x D90mm  
Cl:6.4kg Alu:2.3kg



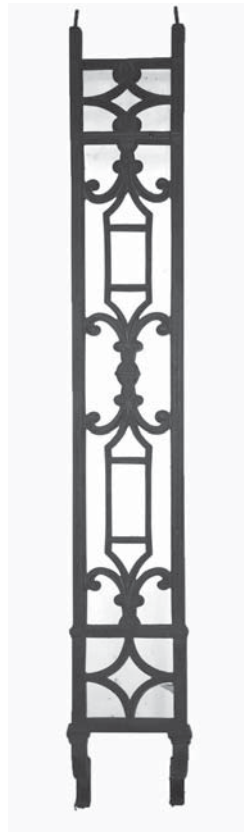
**B012** H735 x W180 x D80mm  
Cl:3.4kg Alu:1.2kg



**B013** H860 x W195 x D60mm  
Cl:6kg Alu:2.2kg



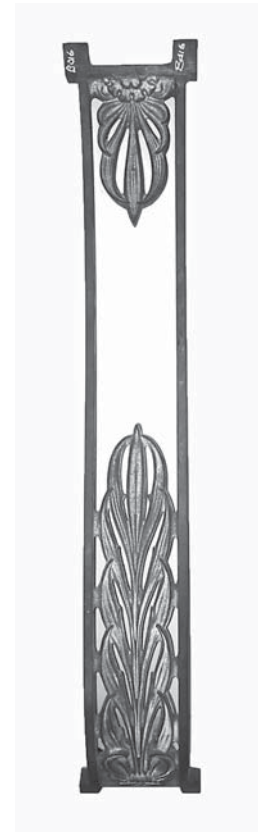
**B014** H775 x W140 x D100mm  
Cl:4kg Alu:1.4kg



**B015** H930 x W140 x D85mm  
Cl:4.6kg Alu:1.7kg



**B016** H875 x W145 x D100mm  
Cl:4.5kg Alu:1.6kg



**B017** H780 x W145 x D130mm  
Cl:4.8kg Alu:1.7kg



# Stair Spindles

Perfect for small, traditional staircases and grand staircases alike – these Victorian design spindles are perfectly suited to stone, iron and wooden stairs and fixing methods can be discussed on a specific basis. Our range covers very simple, elegant designs to more flamboyant, intricate pieces.



Bespoke railing panels for Emily Davidson's grave surround

## Purchasing Guide

- Lengths of the spindles can usually be extended or shortened to suit requirements.
- The tops of the spindles can be cut at angles to match the angle of the staircase.
- Fixing methods can be discussed with our technical sales team who will be happy to help with even the most complex enquiry.
- Width dimensions are taken at the widest section.
- Bar width and type are highlighted per individual pattern.
- Weights of the castings are variable depending on which metal is ordered.
- As a general guide you should allow 75mm for bedding into stonework.
- On most staircases there will be one smaller and one larger spindle to allow for the rake of the staircase.
- Building Controls in the UK stipulate a minimum of 900mm height on stairways and 1100mm on landings.
- All castings are hand-made to order using traditional foundry methods and can be produced in grey iron, ductile iron or in aluminium.

**ORDER TODAY!**

CALL: +44 (0)1506 822 721



**S001** H1150xW110mm  
Bar Type: Square Fluted  
Bar Width @ Base: 20mm  
Cl:3.6kg Alu:1.3kg

**S002** H880xW110mm  
Bar Type: Scalloped  
Bar Width @ Base: 40mm  
Cl:6.0kg Alu:2.2kg

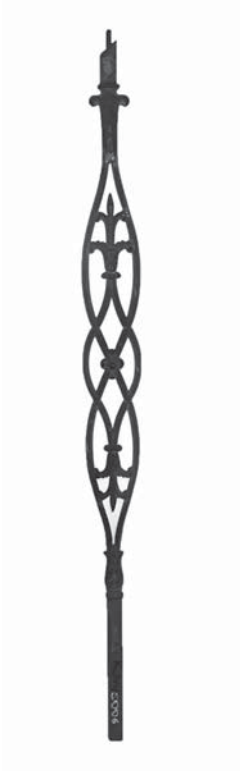
**S003** H930xW105mm  
Bar Type: Square  
Bar Width @ Base: 20mm  
Cl:3.3kg Alu:1.2kg

**S004** H910xW110mm  
Bar Type: Square  
Bar Width @ Base: 25mm  
Cl:5.8kg Alu:2.1kg

**S005** H990xW165mm  
Bar Type: Square  
Bar Width @ Base: 20mm  
Cl:6.9kg Alu:2.5kg



Stair Spindles continued



**S006** H1010xW80mm  
Bar Type: Square  
Bar Width @ Base: 20mm  
Cl:2.4kg Alu:0.9kg



**S007** H1100xW170mm  
Bar Type: Square  
Bar Width @ Base: 20mm  
Cl:6.4kg Alu:2.3kg



**S008** H980xW70mm  
Bar Type: Square  
Bar Width @ Base: 20mm  
Cl:2.5kg Alu:0.9kg



**S009** H960xW100mm  
Bar Type: Square  
Bar Width @ Base: 20mm  
Cl:2.7kg Alu:1.0kg



**S010** H920xW100mm  
Bar Type: Square  
Bar Width @ Base: 20mm  
Cl:4.6kg Alu:1.7kg



**S011** H920xW120mm  
Bar Type: Square  
Bar Width @ Base: 20mm  
Cl:3.6kg Alu:1.3kg



**S012** H1030xW140mm  
Bar Type: Mixed  
Bar Width @ Base: 20mm  
Cl:3.6kg Alu:1.3kg



**S013** H1100xW100mm  
Bar Type: Square  
Bar Width @ Base: 20mm  
Cl:3.5kg Alu:1.3kg



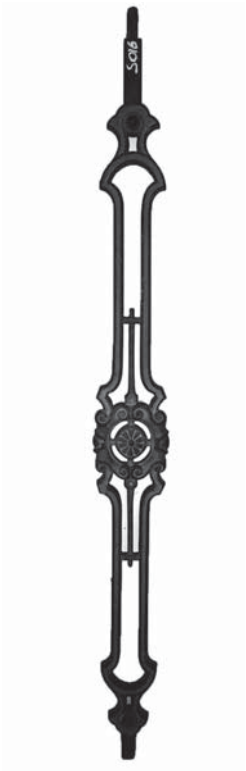
**S014** H1000xW90mm  
Bar Type: Square  
Bar Width @ Base: 20mm  
Cl:3.0kg Alu:1.1kg



**S015** H1040xW90mm  
Bar Type: Square  
Bar Width @ Base: 20mm  
Cl:3.6kg Alu:1.3kg



Stair Spindles continued



**S016** H820xW90mm  
Bar Type: Square  
Bar Width @ Base: 20mm  
Cl:2.5kg Alu:0.9kg



**S017** H880xW75mm  
Bar Type: Square  
Bar Width @ Base: 15mm  
Cl:1.7kg Alu:0.6kg



**S018** H950xW85mm  
Bar Type: Square  
Bar Width @ Base: 20mm  
Cl:2.8kg Alu:1.0kg



**S019** H810xW125mm  
Bar Type: Square  
Bar Width @ Base: 30mm  
Cl:6.1kg Alu:2.2kg



**S020** H850xW130mm  
Bar Type: Square  
Bar Width @ Base: 45mm  
Cl:4.6kg Alu:1.7kg



**S021** H1020xW150mm  
Bar Type: Square  
Bar Width @ Base: 60mm  
Cl:6.2kg Alu:2.2kg



**S022** H870xW100mm  
Cl:3.1kg Alu:1.1kg



**S023** H910xW75mm  
Bar Type: Scalloped  
Bar Width @ Base: 20mm  
Cl:3.2kg Alu:1.2kg



**S024** H840xW120mm  
Bar Type: Rectangular  
Bar Width @ Base: 50x10mm  
Cl:3.2kg Alu:1.2kg



**S025** H980xW105mm  
Bar Type: Square  
Bar Width @ Base: 20mm  
Cl:5.0kg Alu:1.8kg



Stair Spindles continued



**S026** H1080xW100mm  
Bar Type: Round  
Bar Width @ Base: 20mm  
Cl:3.9kg Alu:1.4kg



**S027** H1040xW150mm  
Bar Type: Round  
Bar Width @ Base: 22mm  
Cl:4.5kg Alu:1.6kg



**S028** H1030xW200mm  
Bar Type: Rectangular  
Bar Width @ Base: 25x10mm  
Cl:8.6kg Alu:3.1kg



**S029** H980xW200mm  
Bar Type: Rectangular  
Bar Width @ Base: 25x10mm  
Cl:8.3kg Alu:3.0kg



**S030** H875xW150mm  
Bar Type: Square  
Bar Width @ Base: 20mm  
Cl:5.1kg Alu:1.8kg



**S031** H960xW160mm  
Bar Type: Square  
Bar Width @ Base: 20mm  
Cl:5.6kg Alu:2.0kg



**S032** H1010xW130mm  
Bar Type: Rectangular  
Bar Width @ Base: 25x10mm  
Cl:6.0kg Alu:2.2kg



**S033** H1110xW120mm  
Bar Type: Round  
Bar Width @ Base: 20mm  
Cl:6.5kg Alu:2.3kg



**S034** H950xW120mm  
Bar Type: Round  
Bar Width @ Base: 20mm  
Cl:5.9kg Alu:2.1kg



**S035** H890xW90mm  
Bar Type: Square  
Bar Width @ Base: 20mm  
Cl:3.3kg Alu:1.2kg



Stair Spindles continued



**S036** H1020xW220mm  
Bar Type: Round  
Bar Width: 18mm  
Cl:8.4kg Alu:3.0kg



**S037** H1015xW80mm  
Bar Type: Square  
Bar Width: 20mm  
Cl:3.9kg Alu:1.4kg



**S038** H990xW95mm  
Bar Type: Square  
Bar Width: 30mm  
Cl:6.0kg Alu:2.2kg



**S039** H1040xW90mm  
Bar Type: Square  
Bar Width: 20mm  
Cl:2.5kg Alu:0.9kg



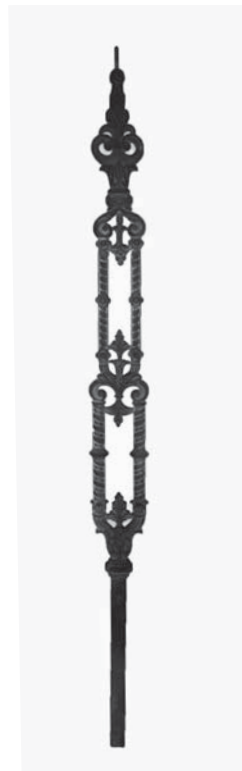
**S040** H860xW150mm  
Bar Type: Quatrefoil  
Bar Width: 20mm  
Cl:3.2kg Alu:1.2kg



**S041** H1040xW110mm  
Bar Type: Round  
Bar Width: 30mm  
Cl:3.9kg Alu:1.4kg



**S042** H1000xW110mm  
Bar Type: Quatrefoil  
Bar Width: 30mm  
Cl:4.8kg Alu:1.7kg



**S043** H1060xW90mm  
Bar Type: Square  
Bar Width: 25mm  
Cl:4.4kg Alu:1.6kg



**S044** H1040xW400mm  
Bar Type: Square  
Bar Width: 20mm  
Cl:4.0kg Alu:1.4kg



**S045** H830xW100mm  
Bar Type: Rectangular  
Bar Width: 30x10mm  
Cl:2.7kg Alu:1.0kg



Stair Spindles continued



**S046** H950xW130mm  
Bar Type: Square  
Bar Width: 20mm  
Cl:4.6kg Alu:1.7kg



**S047** H1050xW70mm  
Bar Type: Square  
Bar Width: 20mm  
Cl:1.7kg Alu:0.6kg



**S048** H1000xW100mm  
Bar Type: Square  
Bar Width: 20mm  
Cl:3.6kg Alu:1.3kg



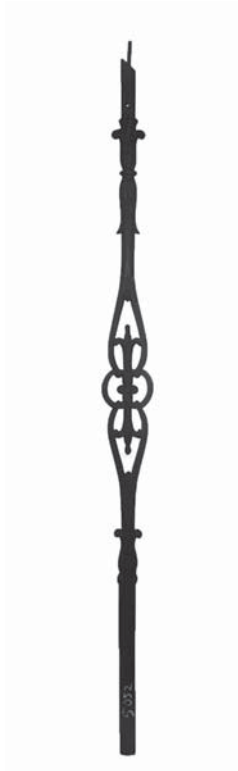
**S049** H900xW100mm  
Bar Type: Round  
Bar Width: 30mm  
Cl:3.6kg Alu:1.3kg



**S050** H1120xW90mm  
Bar Type: Square  
Bar Width: 20mm  
Cl:4.4kg Alu:1.6kg



**S051** H970xW110mm  
Bar Type: Square  
Bar Width: 20mm  
Cl:2.5kg Alu:0.9kg



**S052** H1000xW70mm  
Bar Type: Square  
Bar Width: 22mm  
Cl:3.1kg Alu:1.1kg



**S053** H1000xW135mm  
Bar Type: Oval  
Bar Width: 30x15mm  
Cl:3.9kg Alu:1.4kg



**S054** H945xW130mm  
Bar Type: Round  
Bar Width: 25mm  
Cl:6.4kg Alu:2.3kg



**S055** H1020xW710mm  
Bar Type: Rectangular  
Bar Width: 30x10mm  
Cl:8.9kg Alu:3.2kg





Stair Spindles continued



**S056** H885xW110mm  
Bar Type: Rectangular  
Bar Width: 20x15mm  
Cl:2.6kg Alu:0.9kg



**S057** H975xW125mm  
Bar Type: Square  
Bar Width: 20mm  
Cl:5.5kg Alu:2.0kg



**S058** H730xW100mm  
Bar Type: Rectangular  
Bar Width: 25x10mm  
Cl:3.3kg Alu:1.2kg



**S059** H900xW90mm  
Bar Type: Hexagonal  
Bar Width: 22mm  
Cl:3.4kg Alu:1.2kg



**S060** H940xW70mm  
Bar Type: Square  
Bar Width: 15mm  
Cl:3.3kg Alu:1.2kg



**S061** H1050xW100mm  
Bar Type: Square  
Bar Width: 25mm  
Cl:4.1kg Alu:1.5kg



**S062** H920xW90mm  
Bar Type: Square  
Bar Width: 25mm  
Cl:4.1kg Alu:1.5kg



**S063** H1060xW60mm  
Bar Type: Square  
Bar Width: 20mm  
Cl:2.9kg Alu:1.0kg



**S064** H860xW210mm  
Bar Type: Square  
Bar Width: 20mm  
Cl:4.2kg Alu:1.5kg



**S065** H1060xW75mm  
Bar Type: Square  
Bar Width: 20mm  
Cl:3.0kg Alu:1.1kg



Stair Spindles continued



**S066** H1090xW100mm  
Bar Type: Square  
Bar Width: 20mm  
Cl:4.7kg Alu:1.7kg



**S067** H1040xW75mm  
Bar Type: Round  
Bar Width: 20mm  
Cl:4.3kg Alu:1.5kg



**S068** H1100xW135mm  
Bar Type: Square  
Bar Width: 25mm  
Cl:3.5kg Alu:1.3kg



**S069** H980xW150mm  
Bar Type: Rectangular  
Bar Width: 30x20mm  
Cl:4.9kg Alu:1.8kg



**S070** H1120xW115mm  
Bar Type: Square  
Bar Width: 25mm  
Cl:4.5kg Alu:1.6kg



**S071** H710xW220mm  
Bar Type: Scalloped  
Bar Width: 20mm  
Cl:4.3kg Alu:1.5kg



**S072** H760xW110mm  
Bar Type: Scalloped  
Bar Width: 20mm  
Cl:3.7kg Alu:1.3kg



**S073** H1270xW70mm  
Bar Type: Round  
Bar Width: 20mm  
Cl:5.6kg Alu:2.0kg



**S074** H910xW95mm  
Bar Type: Square  
Bar Width: 25mm  
Cl:3.7kg Alu:1.3kg



**S075** H1100xW90mm  
Bar Type: Square  
Bar Width: 20mm  
Cl:2.8kg Alu:1.0kg



Stair Spindles continued



**S076** H890xW150mm  
Bar Type: Square  
Bar Width: 20mm  
Cl:2.7kg Alu:1.0kg



**S077** H950xW125mm  
Bar Type: Square  
Bar Width: 20mm  
Cl:2.6kg Alu:0.9kg



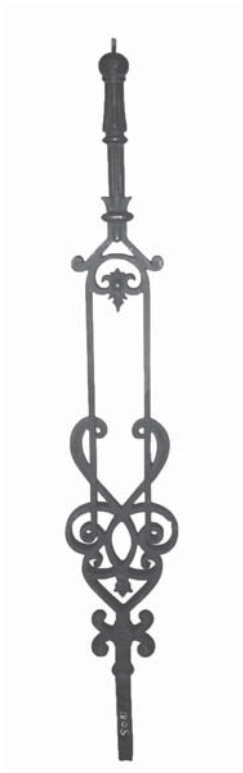
**S078** H860xW85mm  
Bar Type: Square  
Bar Width: 20mm  
Cl:3.0kg Alu:1.1kg



**S079** H1200xW85mm  
Bar Type: Square  
Bar Width: 30mm  
Cl:3.6kg Alu:1.3kg



**S080** H1070xW120mm  
Bar Type: Square  
Bar Width: 30mm  
Cl:6.9kg Alu:2.5kg



**S081** H985xW155mm  
Bar Type: Square  
Bar Width: 20mm  
Cl:4.7kg Alu:1.7kg



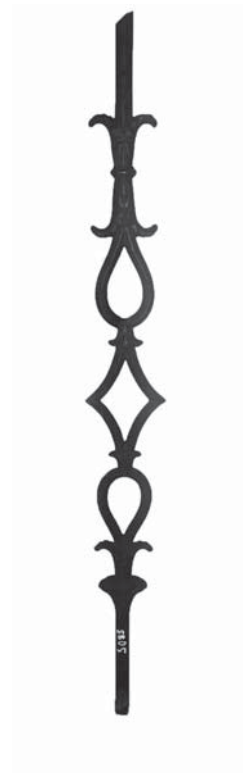
**S082** H710xW105mm  
Cl:2.5kg Alu:0.9kg



**S083** H1100xW90mm  
Bar Type: Square  
Bar Width: 20mm  
Cl:2.3kg Alu:0.8kg



**S084** H910xW10mm  
Bar Type: Square  
Bar Width: 20mm  
Cl:5.0kg Alu:1.8kg



**S085** H930xW100mm  
Bar Type: Square  
Bar Width: 20mm  
Cl:2.7kg Alu:1.0kg



Stair Spindles continued



**S086** H930 x W70mm  
Bar Type: Round  
Bar Width: 20mm  
Cl:3.7kg Alu:1.3kg



**S087** H1060 x W70mm  
Bar Type: Round  
Bar Width: 20mm  
Cl:4.0kg Alu:1.4kg



**S088** H940 x W80mm  
Bar Type: Square  
Bar Width: 20mm  
Cl:5.6kg Alu:2.0kg



**S089** H1100 x W90mm  
Bar Type: Square  
Bar Width: 20mm  
Cl:3.6kg Alu:1.3kg



**S090** H1070 x W200mm  
Bar Type: Oval  
Bar Width: 40x10mm  
Cl:6.4kg Alu:2.3kg



**S091** H1180 x W80mm  
Bar Type: Square  
Bar Width: 20mm  
Cl:4.4kg Alu:1.6kg



**S092** H1100 x W110mm  
Bar Type: Round  
Bar Width: 20mm  
Cl:3.7kg Alu:1.3kg



**S093** H870 x W120mm  
Bar Type: Square  
Bar Width: 20mm  
Cl:3.6kg Alu:1.3kg



**S094** H1050 x W80mm  
Bar Type: Square  
Bar Width: 20mm  
Cl:4.0kg Alu:1.4kg



**S095** H1230 x W65mm  
Bar Type: Square  
Bar Width: 30mm  
Cl:2.7kg Alu:1.0kg



Stair Spindles continued



**S096** H780xW115mm  
Bar Type: N/A  
Bar Width: N/A  
Cl:2.5kg Alu:0.9kg



**S097** H965xW115mm  
Bar Type: N/A  
Bar Width: N/A  
Cl:2.8kg Alu:1.1kg



**S098** H830xW110mm  
Bar Type: Oval  
Bar Width: 30x10mm  
Cl:4.0kg Alu:1.4kg



**S099** H1040xW80mm  
Bar Type: Square  
Bar Width: 20mm  
Cl:4.4kg Alu:1.6kg



**S100** H870xW120mm  
Bar Type: Square  
Bar Width: 20mm  
Cl:2.5kg Alu:0.9kg



**S101** H1100xW100mm  
Bar Type: Square  
Bar Width: 20mm  
Cl:5.2kg Alu:1.9kg



**S102** H1050xW110mm  
Bar Type: Mixed  
Cl:1.6kg Alu:0.6kg



**S103** H870xW105mm  
Bar Type: Square  
Bar Width: 25mm  
Cl:3.5kg Alu:1.3kg



**S104** H1070xW160mm  
Bar Type: Round  
Bar Width: 20mm  
Cl:4.5kg Alu:1.6kg



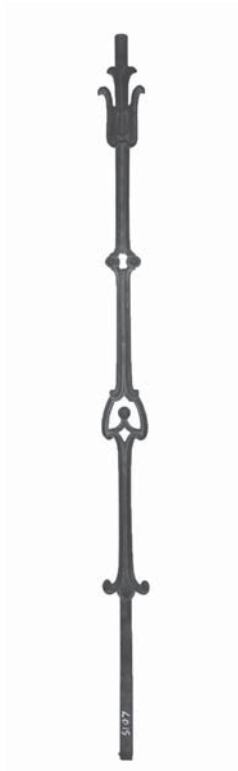
**S105** H11050xW70mm  
Bar Type: Square  
Bar Width: 15mm  
Cl:2.8kg Alu:1.0kg



Stair Spindles continued



**S106** H980xW165mm  
Bar Type: Square  
Bar Width: 30mm  
Cl:2.8kg Alu:1.0kg



**S107** H1050xW70mm  
Bar Type: Square  
Bar Width: 20mm  
Cl:2.2kg Alu:0.8kg



**S108** H1065xW30mm  
Bar Type: Round  
Bar Width: 25mm  
Cl:6.7kg Alu:2.4kg



**S109** H970xW90mm  
Bar Type: Round  
Bar Width: 20mm  
Cl:3.9kg Alu:1.4kg



**S110** H980xW80mm  
Bar Type: Mixed  
Bar Width: 30x10mm  
Cl:3.7kg Alu:1.3kg



**S111** H960xW110mm  
Bar Type: Square  
Bar Width: 20mm  
Cl:2.8kg Alu:1.0kg



**S112** H970xW130mm  
Bar Type: Scalloped  
Bar Width: 20mm  
Cl:3.9kg Alu:1.4kg



**S113** H870xW80mm  
Cl:2.8kg Alu:1.0kg



**S114** H1090xW75mm  
Bar Type: Oval  
Bar Width: 30x15mm  
Cl:3.1kg Alu:1.1kg



**S115** H1020xW92mm  
Bar Type: Square Fluted  
Bar Width: 20mm  
Cl:2.8kg Alu:1.0kg



Stair Spindles continued



**S116** H960 x W60mm  
Bar Type: Square Fluted  
Bar Width: 15mm  
Cl:1.9kg Alu:0.7kg



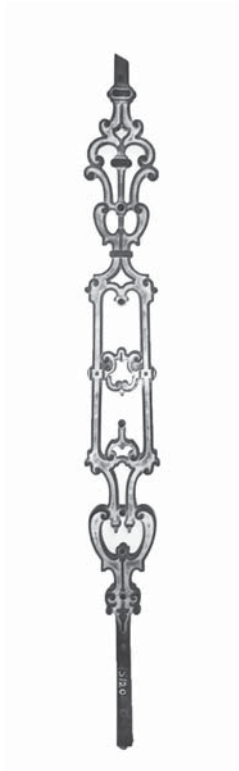
**S117** H1080 x W60mm  
Bar Type: Square  
Bar Width: 20mm  
Cl:4.2kg Alu:1.5kg



**S118** H980 x W70mm  
Bar Type: Square  
Cl:1.0kg Alu:0.4kg



**S119** H920 x W70mm  
Bar Type: Square  
Bar Width: 20mm  
Cl:2.9kg Alu:1.0kg



**S120** H1100 x W120mm  
Bar Type: Square  
Bar Width: 50mm  
Cl:5.5kg Alu:2.0kg



**S121** H1030 x W55mm  
Bar Type: Square  
Bar Width: 25mm  
Cl:2.0kg Alu:0.7kg



Ductile Iron Parapets for Waverley Station  
cast by Ballantine Castings

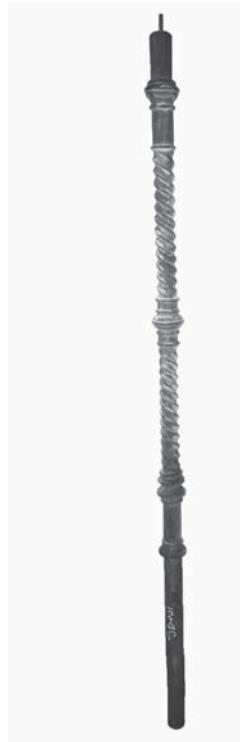


# Stair Bars

A slightly less ornate alternative to stair spindles but more aesthetically appealing than a simple straight bar. These types of bars are ideal for a simpler, more classic look and can be used in a combination with the more ornate, spindles and panels.

## Purchasing Guide

- Lengths of the spindles can usually be extended or shortened to suit requirements.
- The tops of the spindles can be cut at angles to match the angle of the staircase.
- Fixing methods can be discussed with our technical sales team who will be happy to help with even the most complex enquiry.
- Width dimensions are taken at the widest section.
- Bar width and type are highlighted per individual pattern.
- Weights of the castings are variable depending on which metal is ordered.
- As a general guide you should allow 75mm for bedding into stonework.
- All castings are hand-made to order using traditional foundry methods and can be produced in grey iron, ductile iron or in aluminium.



**SB001** H1080 x W25mm  
 Bar Type: Twist  
 Bar Width: 25mm  
 Ornamentation Width: 45mm  
 Cl:5.1kg Alu:1.836kg



**SB002** H920 x W22mm  
 Bar Type: Round  
 Bar Width: 22mm  
 Ornamentation Width: 45mm  
 Cl:2.9kg Alu:1.044kg

**ORDER TODAY!**

CALL: +44 (0)1506 822 721



**SB003** H1200 x W22mm  
 Bar Type: Round  
 Bar Width: 22mm  
 Ornamentation Width: 45mm  
 Cl:3.3kg Alu:1.188kg



**SB004** H1120 x W22mm  
 Bar Type: Round  
 Bar Width: 22mm  
 Ornamentation Width: 45mm  
 Cl:3.1kg Alu:1.116kg



**SB005** H1030 x W25mm  
 Bar Type: Round  
 Bar Width: Tapering  
 Ornamentation Width: 60mm  
 Cl:5.3kg Alu:1.908kg



**SB006** H910 x W20mm  
 Bar Type: Square  
 Bar Width: 25mm  
 Ornamentation Width: 50mm  
 Cl:3.2kg Alu:1.152kg



**SB007** H1010mm x W22mm  
 Bar Type: Quatrefoil  
 Bar Width: 22mm  
 Ornamentation Width: 45mm  
 Cl:3.6kg Alu:1.3kg





Stair Bars continued



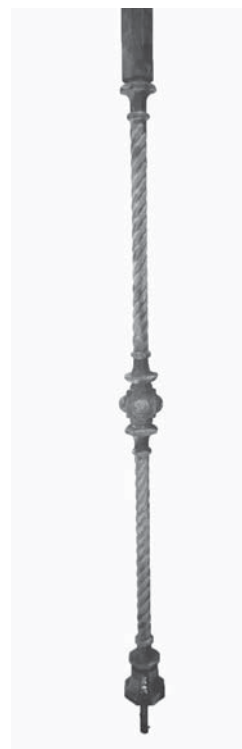
**SB008** H1070 x W25mm  
Bar Type: Twist  
Bar Width: 25mm  
Ornamentation Width: 50mm  
Cl:3.6kg Alu:1.3kg



**SB009** H1000 x W20mm  
Bar Type: Hexagonal  
Bar Width: 20mm  
Ornamentation Width: 35mm  
Cl:3.5kg Alu:1.3kg



**SB010** H1125 x W20mm  
Bar Type: Hexagonal Scalloped  
Bar Width: 24mm  
Ornamentation Width: 60mm  
Cl:3.9kg Alu:1.4kg



**SB011** H860 x W65mm  
Bar Type: Twist  
Bar Width: 22mm  
Ornamentation Width: 55mm  
Cl:3.4kg Alu:1.2kg



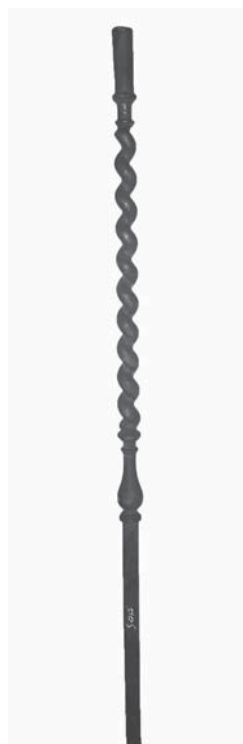
**SB012** H990 x W30mm  
Bar Type: Fluted  
Bar Width: 25mm  
Ornamentation Width: 65mm  
Cl:3.1kg Alu:1.1kg



**SB013** H1100 x W25mm  
Bar Type: Quatrefoil  
Bar Width: 20mm  
Ornamentation Width: 30mm  
Cl:1.9kg Alu:0.7kg



**SB014** H900 x W20mm  
Bar Type: Square  
Bar Width: Mixed  
Ornamentation Width: 120mm  
Cl:4.8kg Alu:1.7kg



**SB015** H1135 x W25mm  
Bar Type: Twist  
Bar Width: 25mm  
Ornamentation Width: 40mm  
Cl:4.4kg Alu:1.6kg



**SB016** H1080 x W25mm  
Bar Type: Mixed  
Bar Width: 30mm  
Ornamentation Width: 65mm  
Cl:4.4kg Alu:1.6kg



**SB017** H1070 x W25mm  
Bar Type: Mixed  
Bar Width: 30mm  
Ornamentation Width: 110mm  
Cl:5.3kg Alu:1.9kg



Stair Bars continued



**SB018** H970 x W25mm  
 Bar Type: Mixed  
 Bar Width: 30mm  
 Ornamentation Width: 110mm  
 Cl:5.1kg Alu:1.8kg



**SB019** H1100 x W30mm  
 Bar Type: Twist  
 Bar Width: 35mm  
 Ornamentation Width: 45mm  
 Cl:4.6kg Alu:1.7kg



**SB020** H108 x W20mm  
 Bar Type: Quatrefoil  
 Bar Width: 20mm  
 Ornamentation Width: 3mm  
 Cl:1.1kg Alu:0.4kg



**SB021** H1080 x W18mm  
 Bar Type: Quatrefoil  
 Bar Width: 18mm  
 Ornamentation Width: 20mm  
 Cl:1.0kg Alu:0.4kg



**SB022** H1050 x W20mm  
 Bar Type: Oval  
 Bar Width: 20mm  
 Ornamentation Width: 40mm  
 Cl:4.0kg Alu:1.4kg



**SB023** H1050 x W22mm  
 Bar Type: Round  
 Bar Width: 22mm  
 Ornamentation Width: 30mm  
 Cl:3.7kg Alu:1.3kg



**SB024** H1100 x W40mm  
 Bar Type: Round  
 Bar Width: 25mm  
 Ornamentation Width: 35mm  
 Cl:5.0kg Alu:1.8kg



**SB025** H910 x W25mm  
 Bar Type: Fluted  
 Bar Width: Mixed  
 Ornamentation Width: 30mm  
 Cl:2.8kg Alu:1.0kg



**SB026** H1200 x W90 x 20mm  
 Bar Type: Quatrefoil  
 Bar Width: 35mm  
 Ornamentation Width: 90mm  
 Cl:5.8kg Alu:2.1kg



**SB027** H910 x W30mm  
 Bar Type: Scalloped  
 Bar Width: 30mm  
 Ornamentation Width: 30mm  
 Cl:4.4kg Alu:1.6kg



Stair Bars continued



**SB028** H840 x W60mm  
Bar Type: Twist  
Bar Width: 25mm  
Ornamentation Width: 50mm  
Cl:4.5kg Alu:1.6kg



**SB029** H1040 x W30mm  
Bar Type: Quatrefoil  
Bar Width: 27mm  
Ornamentation Width: 30mm  
Cl:4.1kg Alu:1.5kg



**SB030** H1080 x W32mm  
Bar Type: Mixed  
Bar Width: 25mm  
Ornamentation Width: 45mm  
Cl:6.1kg Alu:2.2kg



**SB031** H880 x W20mm  
Bar Type: Fluted  
Bar Width: 22mm  
Ornamentation Width: 50mm  
Cl:2.2kg Alu:0.8kg



**SB032** H870 x W35 x 20mm  
Bar Type: Mixed  
Bar Width: Mixed  
Ornamentation Width: 50mm  
Cl:2.8kg Alu:1.0kg



**SB033** H1000 x W20mm  
Bar Type: Round  
Bar Width: 20mm  
Ornamentation Width: 40mm  
Cl:3.6kg Alu:1.3kg



**SB034** H1110 x W24mm  
Bar Type: Twist  
Bar Width: 25mm  
Ornamentation Width: 35mm  
Cl:3.1kg Alu:1.1kg



**SB035** H1060 x W25mm  
Bar Type: Round  
Bar Width: 30mm  
Ornamentation Width: 120mm  
Cl:8.7kg Alu:3.1kg



**SB036** H780 x W50mm  
Bar Type: Round  
Bar Width: Mixed  
Ornamentation Width: 80mm  
Cl:6.5kg Alu:2.3kg



**SB037** H625 x W50mm  
Bar Type: Round  
Bar Width: Mixed  
Ornamentation Width: 80mm  
Cl:5.2kg Alu:1.9kg



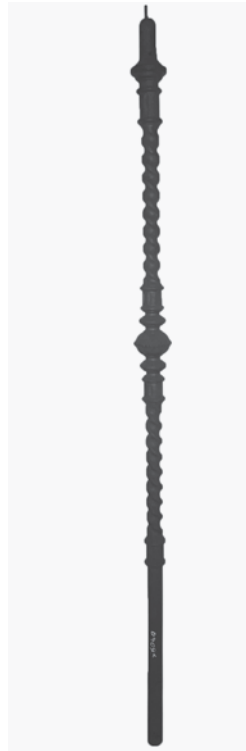
Stair Bars continued



**SB038** H1060 x W20mm  
 Bar Type: Round  
 Bar Width: 20mm  
 Ornamentation Width: 30mm  
 Cl:3.2kg Alu:1.2kg



**SB039** H1070 x W20mm  
 Bar Type: Round  
 Bar Width: 20mm  
 Ornamentation Width: 30mm  
 Cl:3.1kg Alu:1.1kg



**SB040** H1130 x W20mm  
 Bar Type: Twist  
 Bar Width: 20mm  
 Ornamentation Width: 60mm  
 Cl:3.9kg Alu:1.4kg



**SB041** H920 x W22mm  
 Bar Type: Scalloped  
 Bar Width: 20mm  
 Ornamentation Width: 50mm  
 Cl:2.9kg Alu:1.0kg



**SB042** H990 x W90 x 25mm  
 Bar Type: Round  
 Bar Width: 20mm  
 Ornamentation Width: 65mm  
 Cl:4.2kg Alu:1.5kg



**SB043** H970 x W25mm  
 Bar Type: Fluted  
 Bar Width: 20mm  
 Ornamentation Width: 30mm  
 Cl:2.2kg Alu:0.8kg



**SB044** H930 x W25mm  
 Bar Type: Fluted  
 Bar Width: 20mm  
 Ornamentation Width: 30mm  
 Cl:2.2kg Alu:0.8kg



**SB045** H800 x W20mm  
 Bar Type: Scalloped  
 Bar Width: Mixed  
 Ornamentation Width: 55mm  
 Cl:3.1kg Alu:1.1kg



**SB046** H1050 x W25mm  
 Bar Type: Round  
 Bar Width: Mixed  
 Ornamentation Width: 35mm  
 Cl:3.9kg Alu:1.4kg



**SB047** H1070 x W18mm  
 Bar Type: Mixed  
 Bar Width: Mixed  
 Ornamentation Width: 30mm  
 Cl:1.8kg Alu:0.6kg



Stair Bars continued



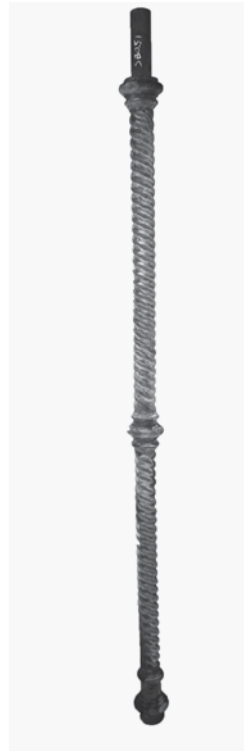
**SB048** H1070 x W25mm  
Bar Type: Fluted  
Bar Width: 20mm  
Ornamentation Width: 30mm  
Cl:2.5kg Alu:0.9kg



**SB049** H1080 x W22mm  
Bar Type: Fluted  
Bar Width: 20mm  
Ornamentation Width: 30mm  
Cl:2.6kg Alu:0.9kg



**SB050** H870 x W20mm  
Bar Type: Quatrefoil  
Bar Width: 20mm  
Ornamentation Width: 30mm  
Cl:1.4kg Alu:0.5kg



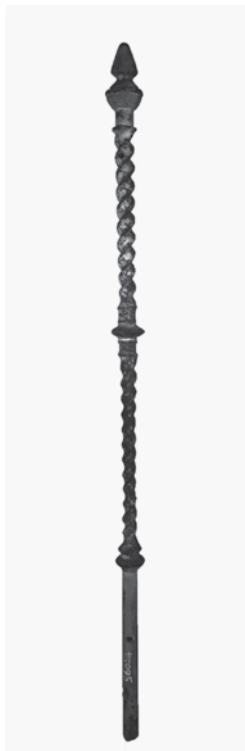
**SB051** H1000 x W25mm  
Bar Type: Twist  
Bar Width: 30mm  
Ornamentation Width: 50mm  
Cl:4.9kg Alu:1.8kg



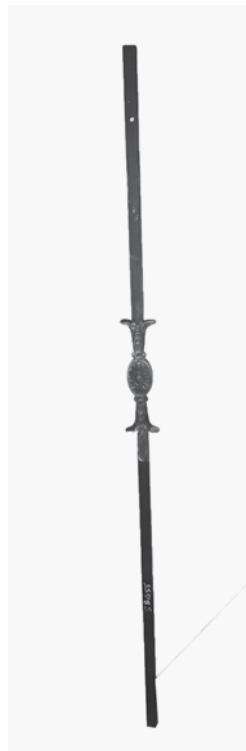
**SB052** H970 x W40mm  
Bar Type: Round  
Bar Width: 25mm  
Ornamentation Width: 65mm  
Cl:5.8kg Alu:2.1kg



**SB053** H855 x W20mm  
Bar Type: Quatrefoil  
Bar Width: 20mm  
Ornamentation Width: 30mm  
Cl:1.5kg Alu:0.5kg



**SB054** H1000 x W20mm  
Bar Type: Twist  
Bar Width: 20mm  
Ornamentation Width: 40mm  
Cl:2.1kg Alu:0.8kg



**SB055** H1000 x W15mm  
Bar Type: Square  
Bar Width: 15mm  
Ornamentation Width: 50mm  
Cl:5.3kg Alu:1.9kg



**SB056** H1100 x W20mm  
Bar Type: Mixed  
Bar Width: 20mm  
Ornamentation Width: 40mm  
Cl:2.1kg Alu:0.8kg



**SB057** H1030 x W20mm  
Bar Type: Mixed  
Bar Width: Mixed  
Ornamentation Width: 64mm  
Cl:3.4kg Alu:1.2kg



# Newel Posts

Perfect for intermediate posts, the end of a railing run or the foot/top of a staircase. Newel posts come in a number of diverse designs and each one offers a different aesthetic appeal. Newel posts are usually the first thing people see when entering a property so picking the right design is of utmost importance. Our railing posts and newel posts are somewhat interchangeable as the heights of the designs can easily be altered in our pattern shop.



Ballantine Castings cast iron railings on front of Edinburgh Castle

## Purchasing Guide

- Lengths of the newel posts can usually be extended or shortened to suit requirements.
- Width dimensions are taken at the widest section.
- For external railing runs finials can be mechanically fixed to posts where required. We can drill and tap these to suit.
- Weights of the castings are variable depending on which metal is ordered.
- As these give strength to a structure as a general guide you should allow 120mm for bedding into stonework.
- All castings are hand-made to order using traditional foundry methods and can be produced in grey iron, ductile iron or in aluminium.

**ORDER TODAY!**

CALL US ON:  
+44 (0)1506 822 721



**N001** H1220mm  
Base: Square W45mm  
Bar: Scalloped W40mm  
Cl:12.5kg Alu:4.5kg



**N002** H1380mm  
Base: Round Flute W55mm  
Bar: Round Flute W50mm  
Cl:11.2kg Alu:4.0kg



**N003** H1100mm  
Base: Square W50mm  
Bar: Quatrefoil W35mm  
Cl:11.9kg Alu:4.3kg



**N004** H1415mm  
Base: Square W50mm  
Bar: Quatrefoil W40mm  
Cl:14.4kg Alu:5.2kg



**N005** H1385mm  
Base: Square W50mm  
Bar: Quatrefoil W40mm  
Cl:14.2kg Alu:5.1kg



**N006** H1385mm  
Base: Square W45mm  
Bar: Scalloped W40mm  
Cl:13.2kg Alu:4.8kg



Newel Posts continued



**N007** H1120mm  
Base: Square W40mm  
Bar: Quatrefoil W30mm  
Cl:7.0kg Alu:2.5kg



**N008** H830mm  
Base: Square W35mm  
Bar: Square Fluted W25mm  
Cl:5.3kg Alu:1.9kg



**N009** H1000mm  
Base: Special W90mm  
Bar: Quatrefoil W35mm  
Cl:12.0kg Alu:4.3kg



**N010** H1000mm  
Base: Square W30mm  
Bar: Mixed W28mm  
Cl:5.0kg Alu:1.8kg



**N011** H1010mm  
Base: Square W50mm  
Bar: Quatrefoil W30mm  
Cl:10.3kg Alu:3.7kg



**N012** H1160mm  
Base: Round W30mm  
Bar: Quatrefoil W25mm  
Cl:5.8kg Alu:2.1kg



**N013** H1010mm  
Base: Square W40mm  
Bar: Quatrefoil W30mm  
Cl:5.8kg Alu:2.1kg



**N014** H1250mm  
Base: Square W45mm  
Bar: Quatrefoil W40mm  
Cl:14.5kg Alu:5.2kg



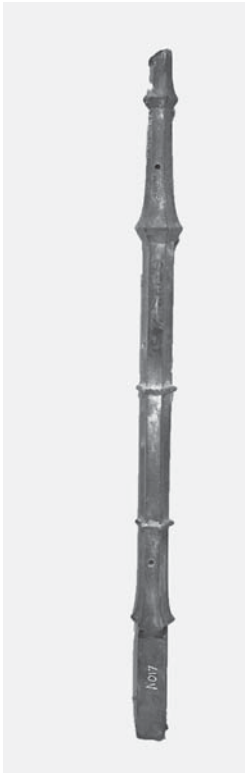
**N015** H1250mm  
Base: Square W45mm  
Bar: Quatrefoil W40mm  
Cl:40.3kg Alu:14.5kg



**N016** H1120mm  
Base: Square W45mm  
Bar: Quatrefoil W30mm  
Cl:9.2kg Alu:3.3kg



Newel Posts continued



**N017** H910mm  
Base: Square W40mm  
Bar: Scalloped W40mm  
Cl:13.6kg Alu:4.9kg



**N018** H920mm  
Base: Round W45mm  
Bar: Mixed W30mm  
Cl:10.3kg Alu:3.7kg



**N019** H1130mm  
Base: Round W50mm  
Bar: Fluted W45mm  
Cl:12.8kg Alu:4.6kg



**N020** H910mm  
Base: Round W95mm  
Bar: Quatrefoil W45mm  
Cl:21.9kg Alu:7.9kg



**N021** H1110mm  
Base: Round W55mm  
Bar: Round W45mm  
Cl:12.6kg Alu:4.5kg



**N022** H1130mm  
Base: Hexagonal W30mm  
Bar: Hexagonal W50mm  
Cl:5.5kg Alu:2.0kg



**N023** H1030mm  
Base: Hexagonal W55mm  
Bar: Hexagonal W35mm  
Cl:4.4kg Alu:1.6kg



**N024** H1050m  
Base: Hexagonal W50mm  
Bar: Square Mixed W40mm  
Cl:9.0kg Alu:3.2kg



**N025** H1090mm  
Base: Special W90mm  
Bar: Quatrefoil W40mm  
Cl:9.6kg Alu:3.5kg



**N026** H1030mm  
Base: Round Fluted W60mm  
Bar: Fluted W30mm  
Cl:7.0kg Alu:2.5kg





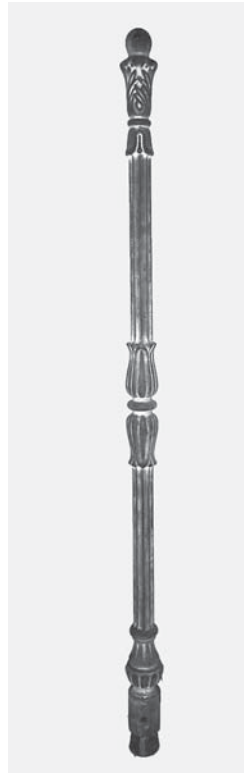
Newel Posts continued



**N027** H930mm  
Base: Round W25mm  
Bar: Twist W25mm  
Cl:4.1kg Alu:1.5kg



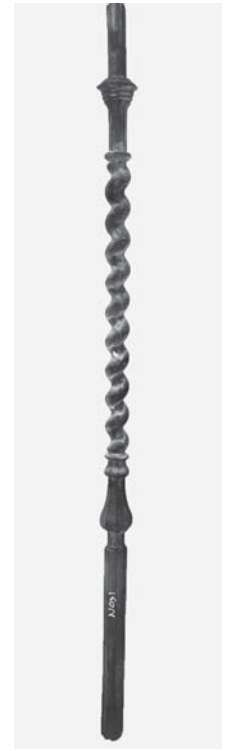
**N028** H920mm  
Base: Square W40mm  
Bar: Quatrefoil W30mm  
Cl:7.5kg Alu:2.7kg



**N029** H925mm  
Base: Round W40mm  
Bar: Fluted W25mm  
Cl:4.4kg Alu:1.6kg



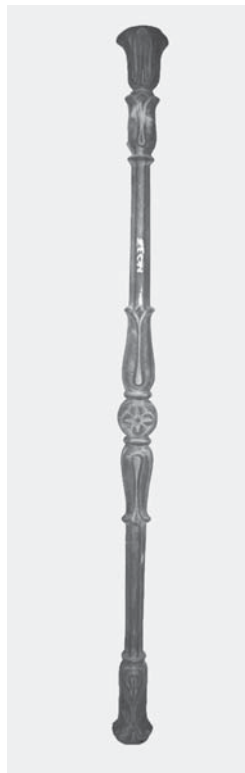
**N030** H840mm  
Base: Square W50mm  
Bar: Quatrefoil W30mm  
Cl:8.6kg Alu:3.1kg



**N031** H1190mm  
Base: Scalloped W35mm  
Bar: Twist W35mm  
Cl:6.3kg Alu:2.3kg



**N032** H1050mm  
Base: Scalloped W60mm  
Bar: Scalloped W50mm  
Cl:13.9kg Alu:5.0kg



**N033** H1070mm  
Base: Special W60mm  
Bar: Scalloped W30mm  
Cl:7.2kg Alu:2.6kg



**N034** H1120mm  
Base: Round W50mm  
Bar: Round W30mm  
Cl:7.5kg Alu:2.7kg



**N035** H1050mm  
Base: Square W70mm  
Bar: Mixed W35mm  
Cl:12.2kg Alu:4.4kg



**N036** H905mm  
Base: Special W90mm  
Bar: Quatrefoil W40mm  
Cl:8.4kg Alu:3.0kg



Newel Posts continued



**N037** H865mm  
Base: Square W45mm  
Bar: Scalloped W35mm  
Cl:8.5kg Alu:3.1kg



**N038** H1130mm  
Base: Square Fluted W35mm  
Bar: Square Fluted W30mm  
Cl:9.7kg Alu:3.5kg



**N039** H1000mm  
Base: Square W40mm  
Bar: Square Fluted W28mm  
Cl:6.7kg Alu:2.4kg



**N040** H1030m  
Base: Round W100mm  
Bar: Square Mixed W40mm  
Cl:11.5kg Alu:4.1kg



**N041** H1040mm  
Base: Square W40mm  
Bar: Hexagonal W40mm  
Cl:8.6kg Alu:3.1kg



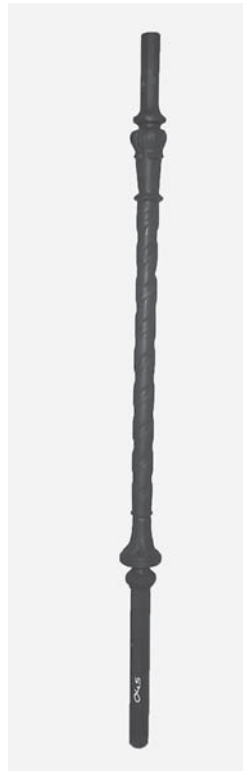
**N042** H900mm  
Base: Round W50mm  
Bar: Quatrefoil W25mm  
Cl:4.7kg Alu:1.7kg



**N043** H1220mm  
Base: Square W35mm  
Bar: Mixed W25mm  
Cl:6.1kg Alu:2.2kg



**N044** H1200mm  
Base: Round W30mm  
Bar: Twist W35mm  
Cl:10.6kg Alu:3.8kg



**N045** H950mm  
Base: Round W25mm  
Bar: Rope W30mm  
Cl:5.6kg Alu:2.0kg

Tradition, Heritage, Craft  
Hand Crafted Architectural Castings

ENGINEERING CASTINGS  
GREENSAND CASTINGS  
METALLURGY  
PATTERN MAKING  
DESIGN AND CONSULTANCY  
QUALITY



Ballantine Castings Ltd.  
Links Road, Bo'ness EH51 9PW  
Scotland UK

T: 01506 822 721  
F: 01506 827 326  
E: sales@ballantineboness.co.uk  
[www.ballantinecastings.co.uk](http://www.ballantinecastings.co.uk)



Company Registration: SC471288