

Period Embossed



H&E SMITH



About H&E Smith

Specialist Tile Manufacturers and
Distributors Since 1926



Factory In Stoke-On-Trent

Our experience with the bespoke manufacture of ceramics has greatly enhanced our ability to be able to work closely and effectively with architects, designers and specifiers.

This has culminated in our large collection of clients that we now supply throughout the world, both in the fashion and hospitality sectors. These include Ben Sherman, Ted Baker, Hawksmoor, Jamie Oliver, Nandos, Gourmet Burger Kitchen and Byron Restaurants.

Our knowledge of the market has enabled us to expand our product offer, incorporating the latest ink-jet digital technology, innovative new materials in extra large formats, ultra-thin porcelain panels and vast colour palettes, all available to the client in one easy process.

As designers and creators of ceramics, we are passionate to explore new horizons with materials, colours and textures. These are reflected in our comprehensive product ranges.

Samples can be ordered
through our website and
dispatched within hours.



Period Tiles



During the Victorian era there was a tremendous resurgence of interest in the use of tiles for all kinds of projects.

Two principal design movements contributed to that increase in interest, the Gothic Revival, and the Arts and Crafts Movement.

Individually patterned tiles, or tiles which could be laid together to form patterns, were now mechanically produced in volume.



Commercial Useage

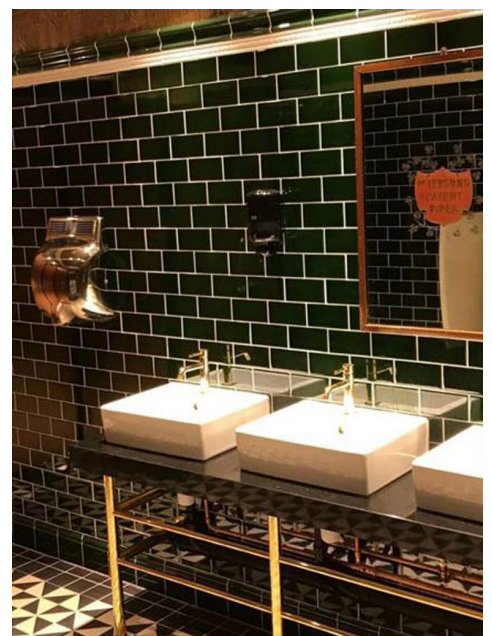
*Need inspiration for
your next project?*

When it comes to creating a high end, truly luxurious look and feel, many designers opt for our Period Embossed range.

From backdrops to expensive clothing, intimate booth areas in bars, and eye-catching pillars to the most opulent of bathrooms, you will certainly leave your clients with a renovation they want to shout about.



Plain tiles are used alongside embossed tiles with matching corners and mouldings to create a stunning raised effect that you'll just want to touch over and over and over again!



Bespoke Service

Sometimes a project requires something special.

Hawksmoor required bespoke tiles for a restaurant project. We consulted on the type, style, colour and pattern with them and helped make their restaurant interior project a success.



H&E Smith have an excellent track record consulting with clients over the production of distinctive bespoke wall tiles.

Christian Louboutin wanted us to create a bespoke tile for them, incorporating their brand and initials. We consulted with them and delivered the completed tiles to their full satisfaction.

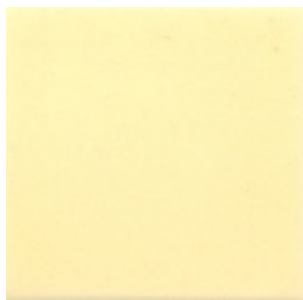


Period Embossed

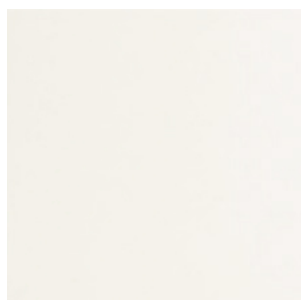
Colours



Magnolia



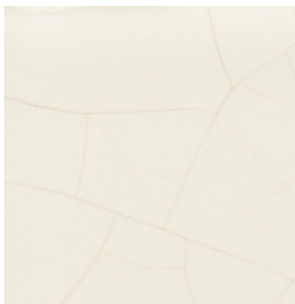
Primrose



Polished White



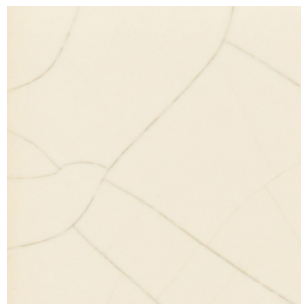
Snow Drop



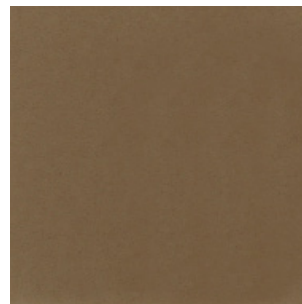
Crackle Snow Drop



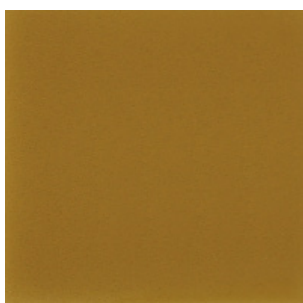
Off White



Crackle Off White



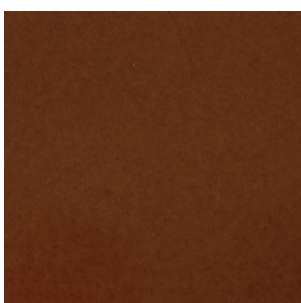
Mocha



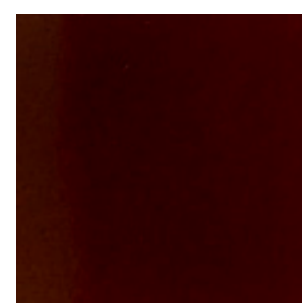
Inca Gold



Honey

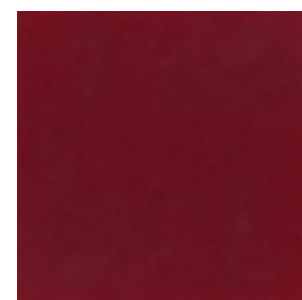


Victorian Brown



Tea Pot Brown

Please note that these colour swatches may vary in colour depending on light and your PC display settings. Crackle designs have a pigment applied to highlight the crackle effect. For a true representation of colour, please order a sample.



Burgundy

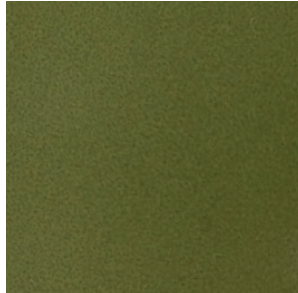
Period Embossed

Colours

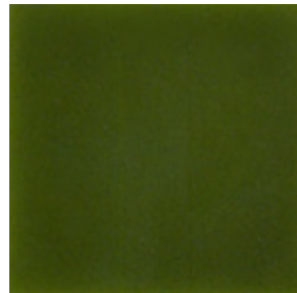
25+
Colors



Apple



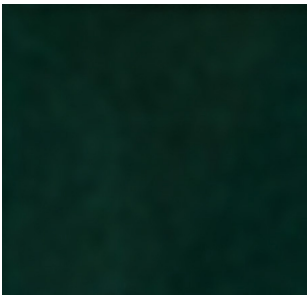
Celadon



Jade



Victorian Green



Teal



Periwinkle



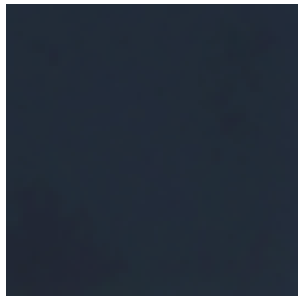
Moonstone



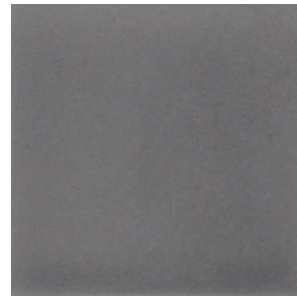
Bluebell



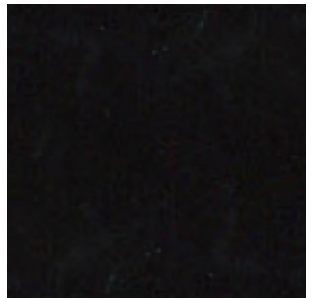
Cobalt



Midnight Blue



Victorian Grey



Victorian Black

25 Standard colours are available, however almost any colour from the RAL selector or Pantone colour finder can be applied if required.

* Please note that not all tiles are available in every colour

Period Embossed

Designs

25
Designs

Available tile, cornice and moulding designs



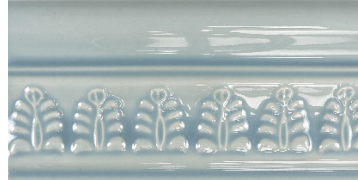
Floral 9"X6"



Pomegranate
9"X6"



Fluted Skirting 9"X3"



Wheat Sheaf 6"X3"



Edwardian Dado
6"X3"



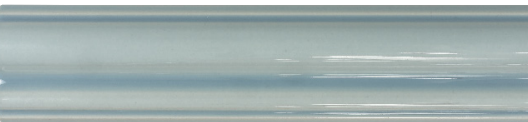
Fluted Dado
9"X3"



Royal Garland Dado 6"X3"



Georgian Dado
6"X3"



Dado 9"X2"



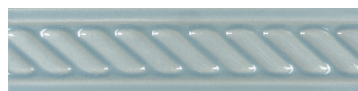
Crown 6"X1.5"



Classic Moulding 6"X3"



Dentil
8"



Cable
6"X1.5"



Royal Windsor Quarter 6"X6"



**Medalion
6"X6"**



**Thistle
6"X3"**



**Leaf
6"X3"**



**Garland Border
6"X6"**



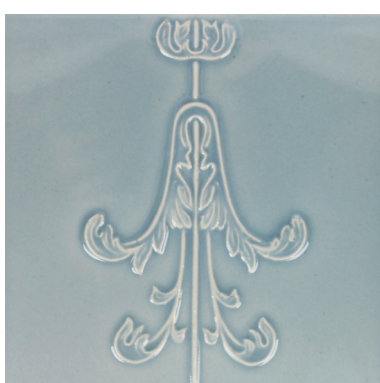
Minor Pendant 6"X6"



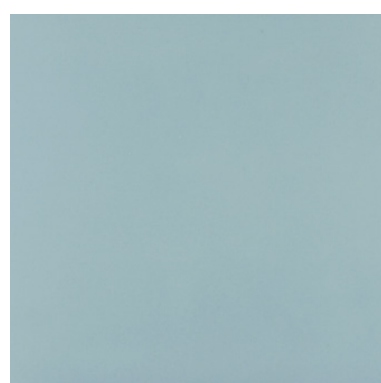
**Rosette Border
6"X4"**



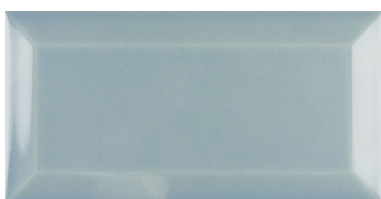
Imperial 6"X6"



**Minor Pendant Dropper
6"X6"**



**Plain
6"X1" / 6"X1.5" / 6"X2" 6"X3"
/ 6"X6" / 8"X4" 9"X3" / 9"X6"**



**Metro
150x75mm**



**Metro
75x75mm**



**Skirting
6"X6"**

See next page for corners fittings.

Period Embossed

Corners

11
Designs

Available corner fittings



**Skirting
Corner
6"**



**Straight
Corner
6"**



**Quad
Corner
6"**



**Fluted
Dado
Corner
3"**



**Classic
Corner
3"**



**Crown
Corner
1.5"**



**Cable
Corner
1.5"**



**Fluted
Skirting
Dado
Corner
3"**



**Royal
Garland
Dado
Corner
3"**



**Leaf
Corner
3"**



**Thistle
Corner
3"**

Contact Us

Period Embossed tiles are a superb choice for creating distinctive internal feature walls.

Our period tiles are manufactured at our factory located in Stoke-On-Trent, Staffordshire.

We manufacture our tiles in a wide range of traditional colour options in order to meet the varying requirements of the designers and architects we frequently work with.

Showcase Sample Box



Call:

[01782 281617](tel:01782281617)

Email:

sales@hesmith.co.uk

Web:

www.hesmith.co.uk

If you are an architect or specifier working on a project, please contact us to request our box of samples.



H&E SMITH

Specialist Tile Manufacturers
& Distributors Since 1926

The beauty, grace and elegance of a traditionally crafted tile is an
inspiration that helps create truly wonderful things.

www.hesmith.co.uk